

Horton & Senate



73 Oakly Road, Redditch, B97 4EF

£1,150

- 3 Storey Mid Terrace
- Rear Garden
- Council Tax Band A
- Unfurnished
- 3 Double Bedrooms
- Gas Central Heating
- EPC Rating D
- Recently Refurbished
- Downstairs Bathroom
- Available August

49a Station Road, Knowle, Solihull, West Midlands, B93 0HN
01564 773200

info@senateproperty.co.uk

73 Oakly Road, Redditch B97 4EF

Horton & Senate are pleased to offer this three double bedroom mid terrace property with rear garden and usable cellar. Located close to the amenities in Redditch Town Centre and with M42 motorway link close by. Benefiting from double glazing, gas central heating and comprising of front reception room, rear reception room with under stairs storage and staircase to first floor, fitted kitchen with access to rear garden, refitted downstairs bathroom, two double bedrooms to first floor and staircase to converted loft bedroom and easy to maintain rear garden. Available August.

3

1

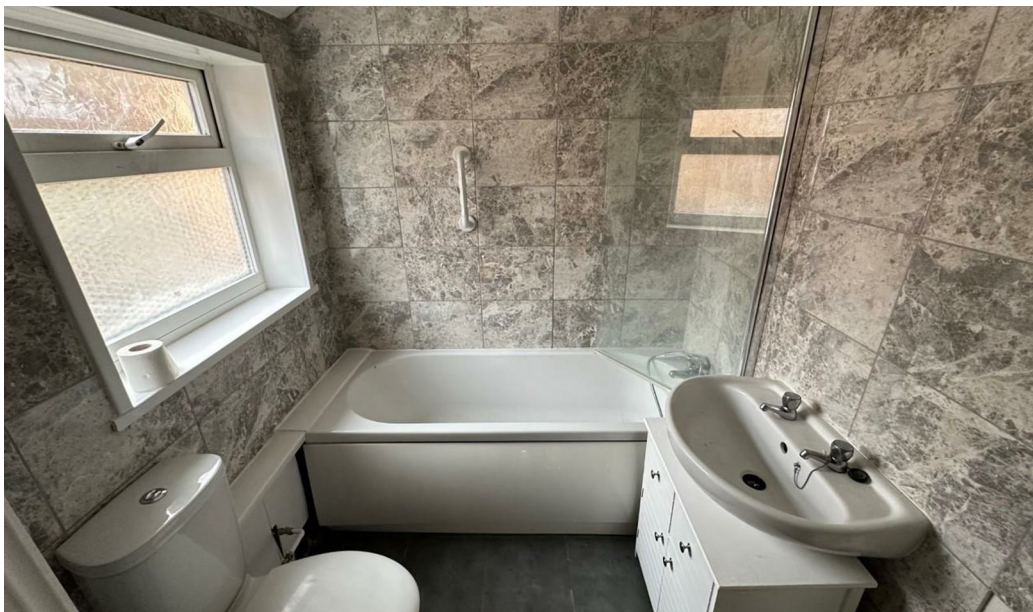
2

D

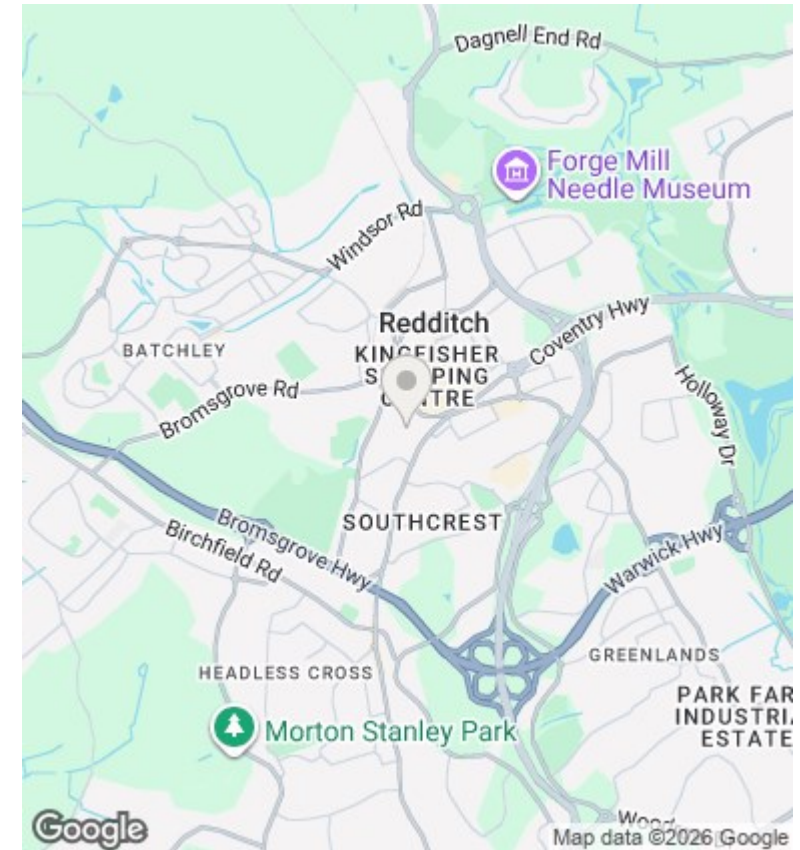
Council Tax Band: A











Directions

Viewings

Viewings by arrangement only. Call 01564 773200 to make an appointment.

Council Tax Band

C

Energy Efficiency Rating		Current	Potential
<i>Very energy efficient - lower running costs</i>			
(92 plus)	A		
(81-91)	B		
(69-80)	C		79
(55-68)	D	55	
(39-54)	E		
(21-38)	F		
(1-20)	G		
<i>Not energy efficient - higher running costs</i>			
England & Wales		EU Directive 2002/91/EC	